



Winter Star

Advent Calendar

QUILTPATTERN
BY

BRIGITTE
HEITLAND





MATERIALS LIST

All fabrics are from 44" wide quilting cotton.

For the quilt top:

- an assortment of 6 Fat Eights in coloured blenders
- an assortment of 12 Fat Eights in low volumes
- 4 Fat Eights or 1/2 yard of a grey blender for the background

For the backing:

- 1 yard

For the binding:

- 1 Fat Eights or 1/2 yard of a dark grey blender

Batting:

- 37" x 37" piece of batting (80% cotton, 20% poly)

NOTE:

All seam allowances are 1/4" unless otherwise stated.

1 inch = 2.53cm

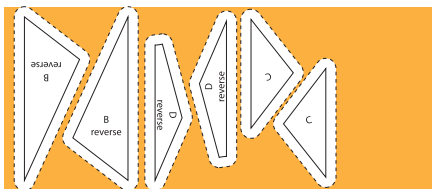
1 yard = 0.915m

Please read carefully through all instructions before you get started!

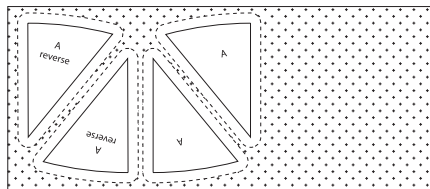
I. CUTTING

Cut out the template pieces, which include 1/2" of seam allowance for easy placement.

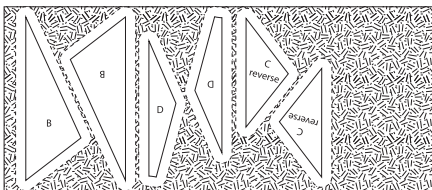
From the coloured blenders, cut from each Fat Eighth: 2 pieces B reverse, 2 pieces C, 2 pieces D reverse



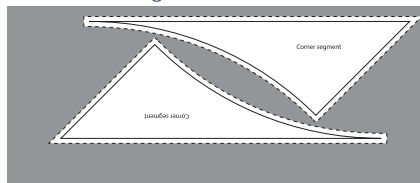
From 6 of your lightest coloured low volumes, cut from each Fat Eighth: 2 pieces A, 2 pieces A reverse



From 6 of your slightly darker low volumes, cut from each Fat Eighth: 2 pieces B, 2 pieces C reverse, 2 pieces D



From the grey background fabric, cut from 2 Fat Eighths: 2 corner segments and from another 2 Fat Eighths: 2 corner segments reversed, so that you have 8 corner segments in total. **NOTE:** You can only get 2 identical segments from one Fat Eighth, not a normal + reversed segment!



Binding: 7 strips 2" x width of Fat Eighth or 3 strips 2" x WOF. Sew the strips end to end for the binding.

2. PIECING THE CIRCLE SECTIONS

If you are not familiar with foundation paper piecing you will find general instructions for this technique explained in the appendix.

Make 12 copies of circle sections. Roughly cut out the paper foundation circle sections, lay them out simulating the finished circle. Label each part of the sections with the needed fabric piece referring to the diagram on the last page. This will help you to keep everything organized.

Following alphabetical order, foundation piece 24 circle sections, pressing after each fabric piece is added. When the sections are complete, trim excess fabric and paper along the outer dashed line.

3. ASSEMBLING THE QUILT TOP

Referring to the quilt assembly diagram, lay out the sections to make sure they are in the right order. Join two mirrored sections for a star beam and align matching seams before stitching. After stitching, press seam allowance open. Join six star beams to get a half circle. Repeat. Then, sew two half-circle units together. Carefully trim any excess fabric in six star beams to get a half circle. Repeat. Then, sew two half-circle units together. Carefully trim any excess fabric in the center so the circle lies flat.

Place center point template on a light colored low volume scrap and cut it out, including the 1/4" seam allowance. Baste 1/8" from the edge of the fabric. Now trim 1/4" seam allowance from the paper template, place it on the middle of the wrong side of the center point fabric circle and draw up the basting until the circle is the desired size. Press. Appliqué by machine or by hand, centered onto the pieced star.

Referring to the quilt assembly diagram, lay out all 8 corner sections and join them with 1/4" seams to make the circle background. Press seam allowances open.

Remove the foundation paper from all sections. Lay out the circle and background, lining up the seams. Flip the background onto the center and pin the intersections. Sew together. Press seam allowances toward the background.

4. FINISHING THE QUILT

Layer, quilt and bind.

FOUNDATION PAPER PIECING

These are general instructions on how to do paper piecing. You can apply them to all paper piecing projects.

Make copies or print the foundation paper sheet of the pattern.

Set the stitch length on your sewing machine to a small stitch, about 12-18 per inch, and use a needle size 90/14, so papers will tear off easily later.

Sew pieces on to the foundation in alphabetical or numerical order.

Using fabric pieces that are larger than the numbered areas (my cutting instructions include $\frac{1}{2}$ " seam allowance), place fabrics for #1 and #2 right sides together. Position the paper pattern on top of fabrics with printed side of paper facing you. Make sure the fabric for #1 is under that area and that the edges of fabrics extend $\frac{1}{4}$ " beyond stitching line between the two areas. Hold up to a light source to check placement. Pin into place. (1)

Sew on stitching line between the two areas, extending stitching into seam allowances.

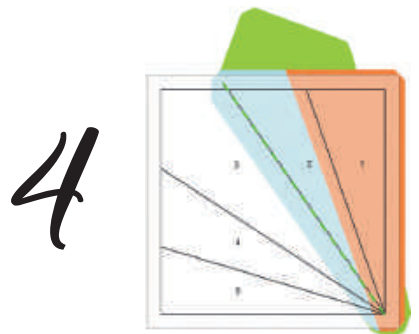
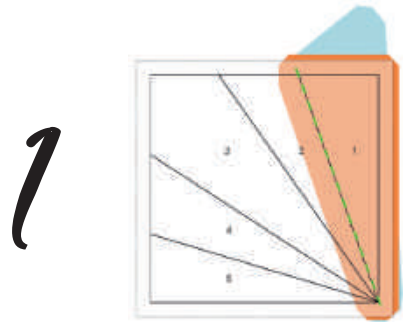
Trim the seam allowances to just $\frac{1}{4}$ ", being careful not to cut the paper. Flip the work over. Open up fabric and press or finger press the seam (2).

On one side of the work you see the right sides of the fabric. On the other side you see the printed pattern.

Continue to add pieces in numerical order until foundation paper is covered (3), (4).

Use rotary cutter and ruler to trim excess paper and fabric along outer pattern lines. Do not trim away seam allowances. Join pieced sections to complete block.

Carefully tear off foundation paper.

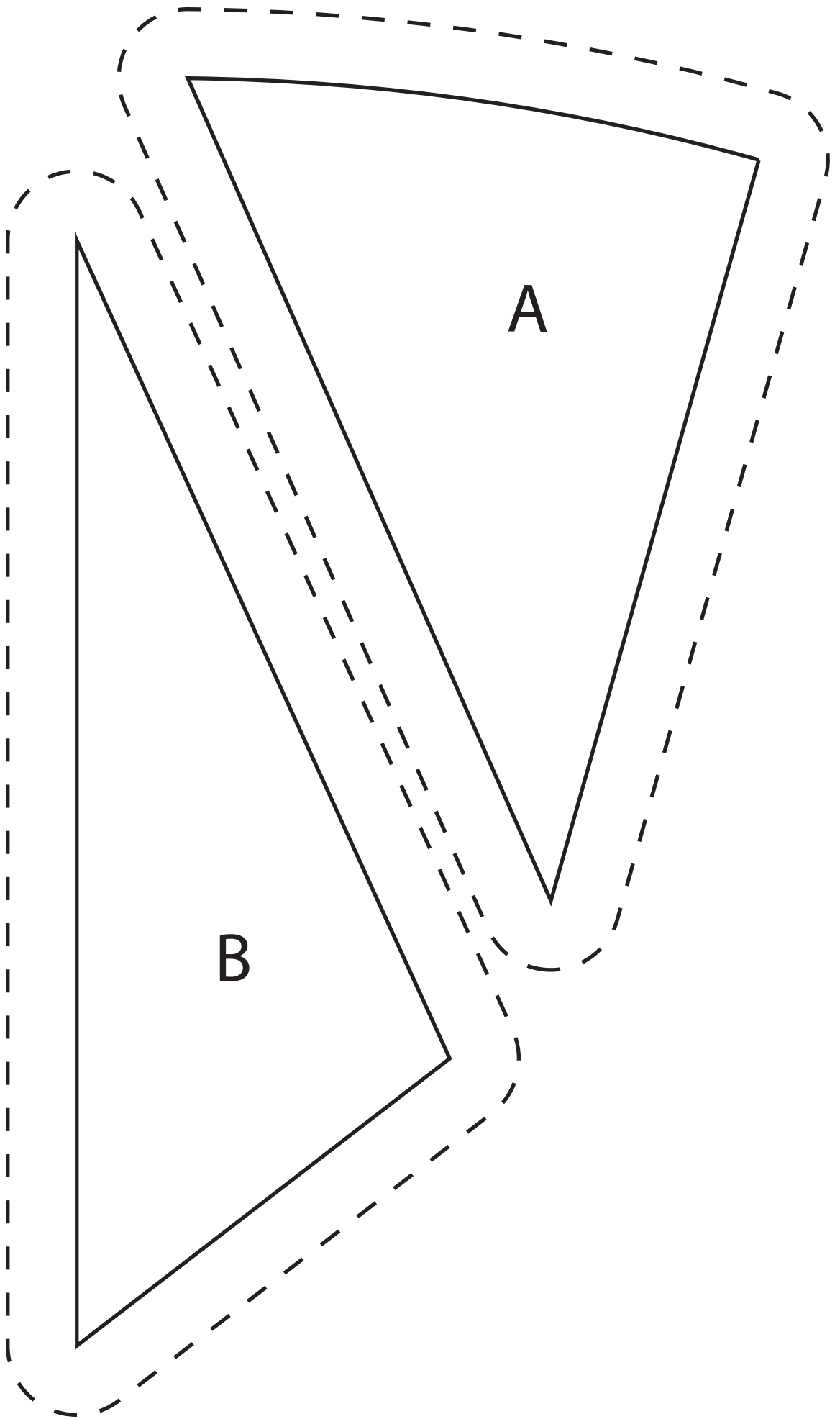


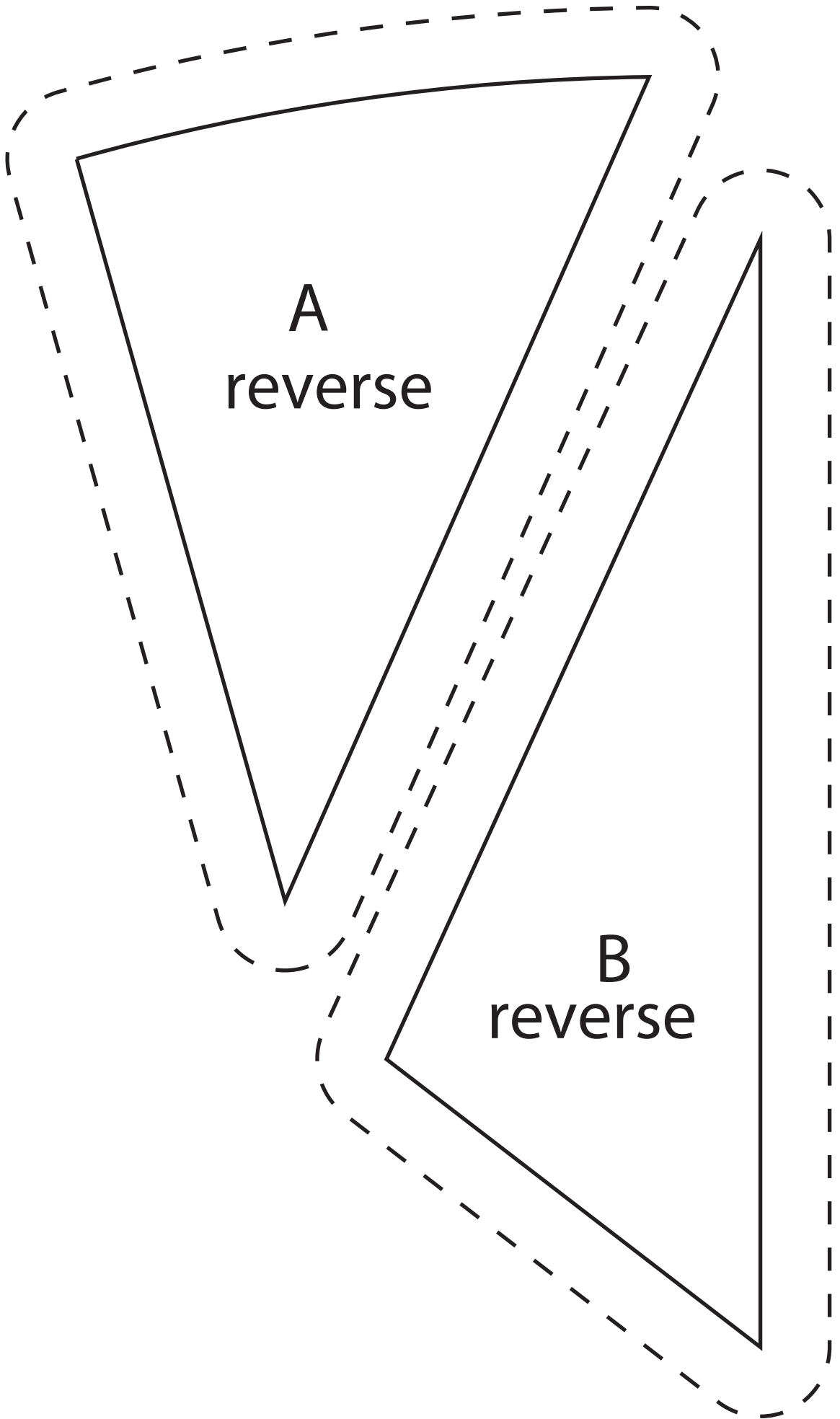
BONUS IDEAS

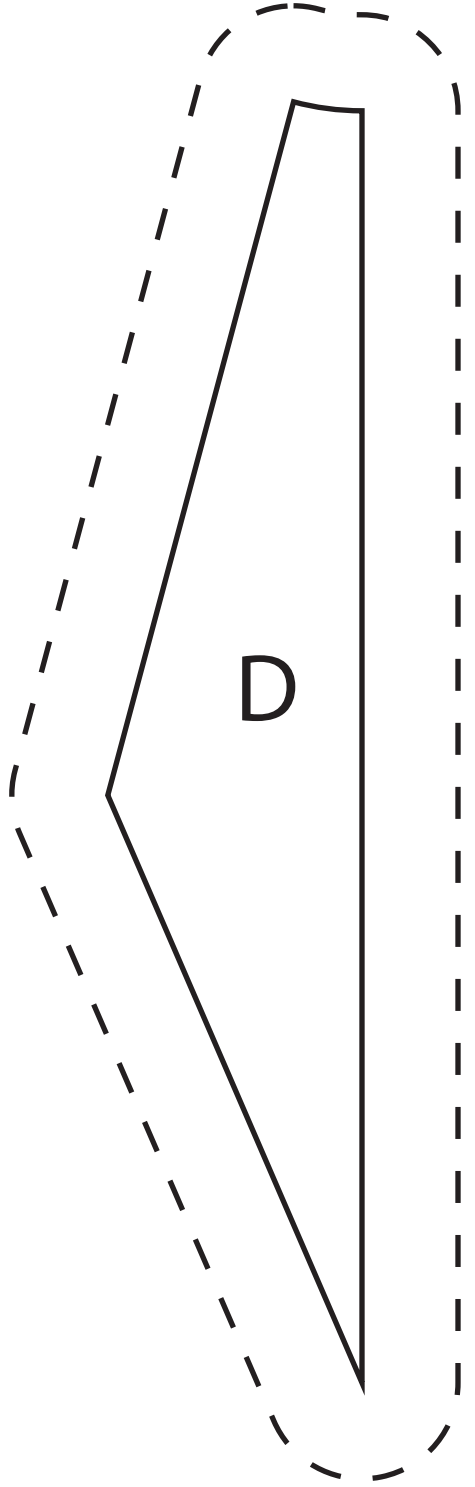
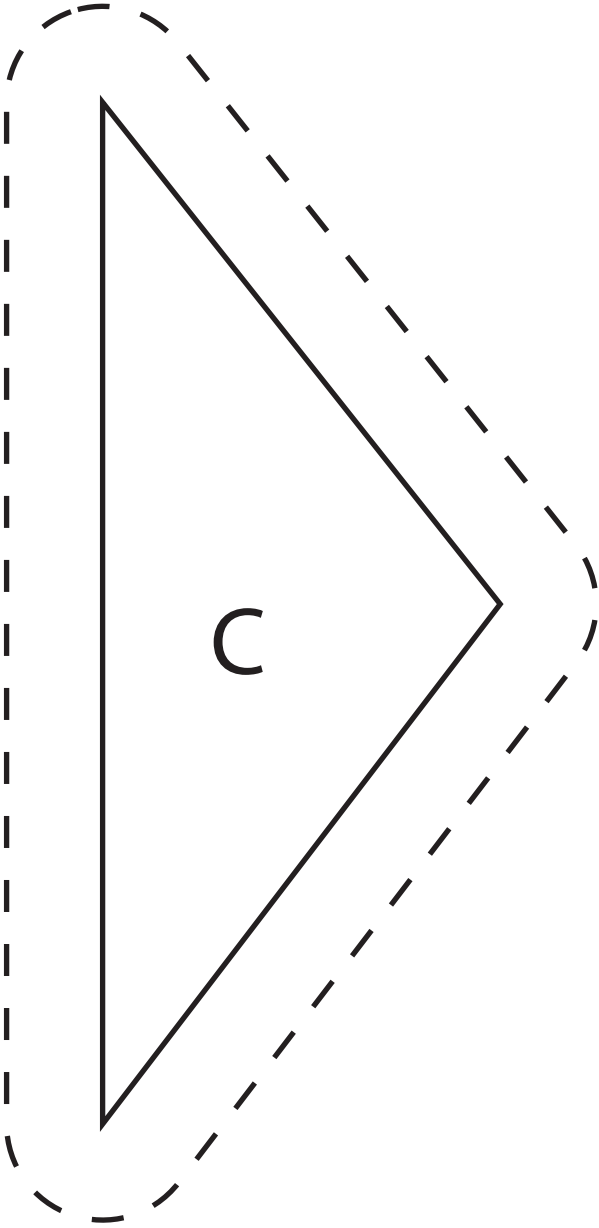
If you are very frugal with your cutting, you might have some leftovers. Use them to enlarge your quilt with a border. The example on the right uses leftover low volumes cut as 4 1/2" strips in any length. Sew them together to get a long strip and frame your quilt to enlarge it.

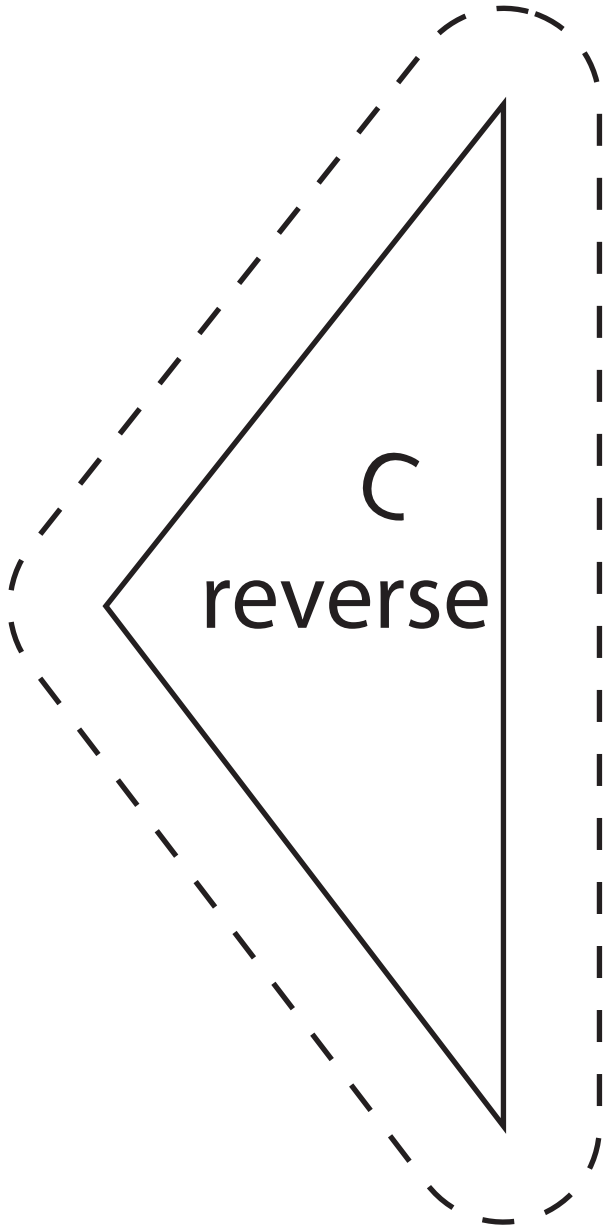
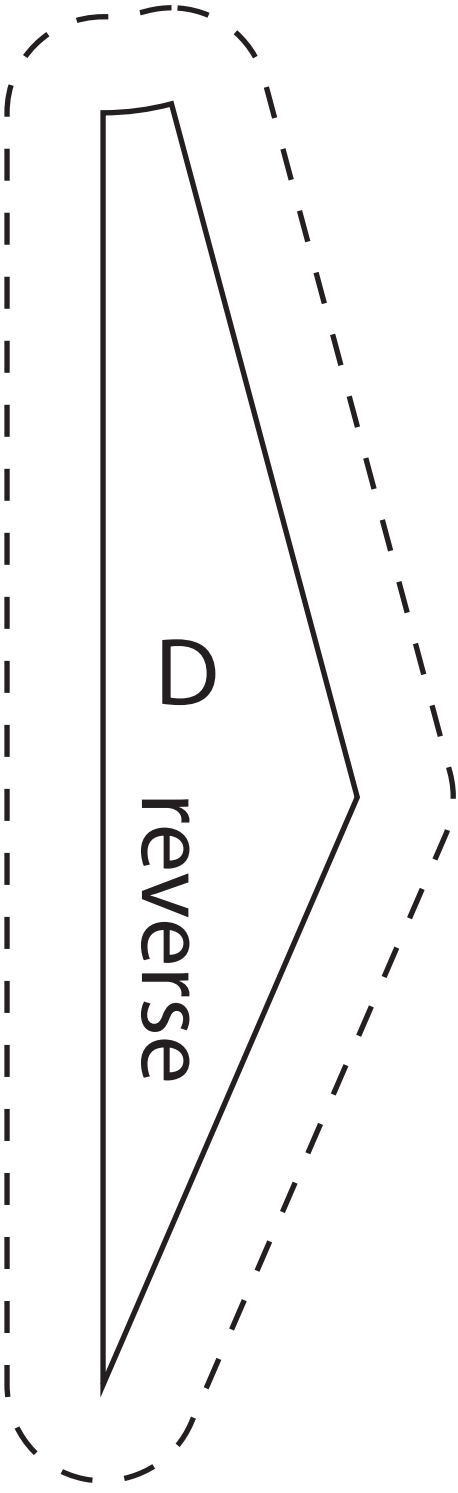


Or you use your leftovers to make a nice pillow. The example shows an 18" x 18" front, made from 36 half-square triangles. A finished half-square triangle measures 3", so cut 36 squares 3 7/8" x 3 7/8" from your remaining fabrics for this bonus project. (Cut squares in half on diagonal to create triangles. Mix them up and sew the pieces back together.)





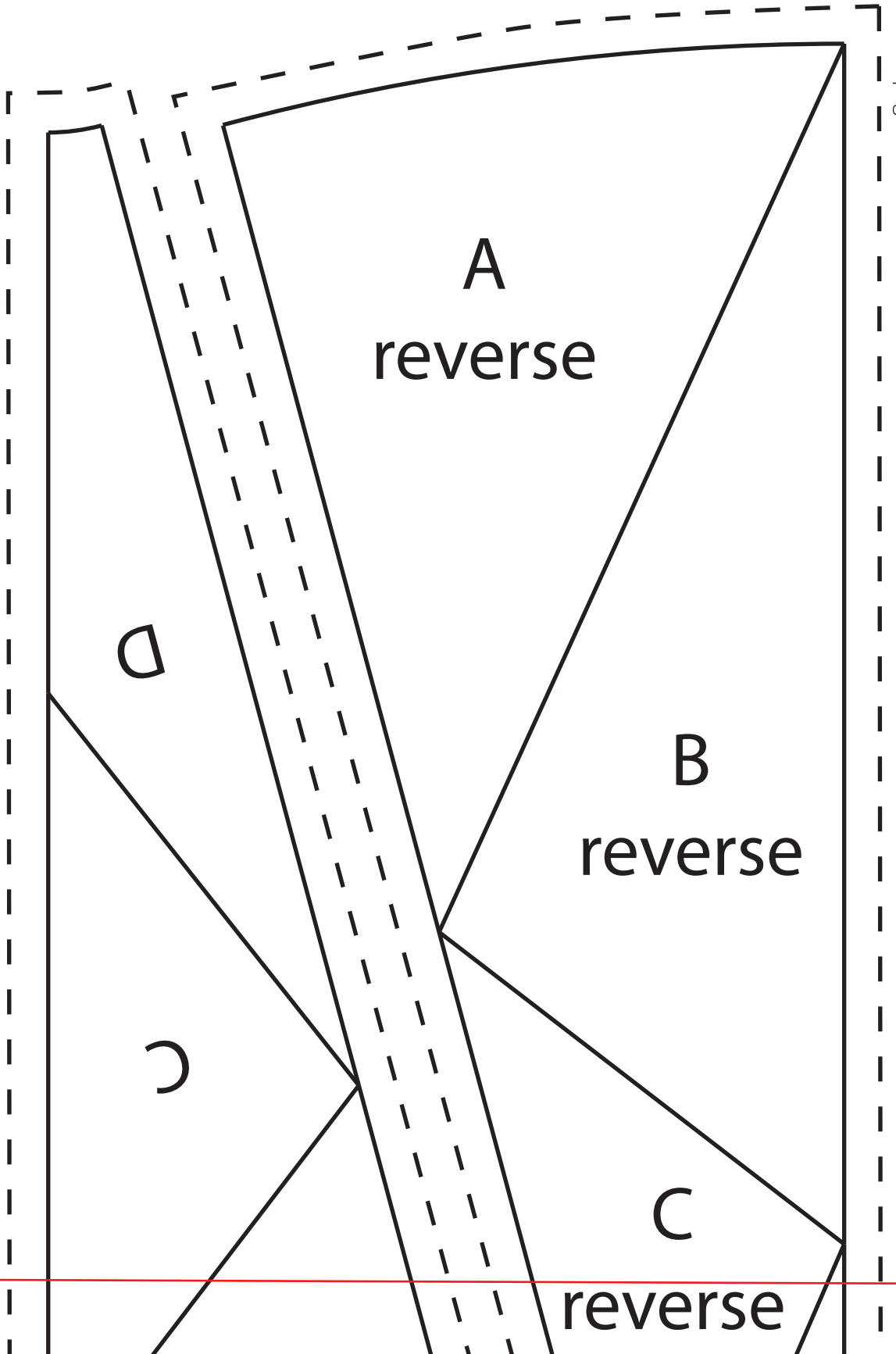


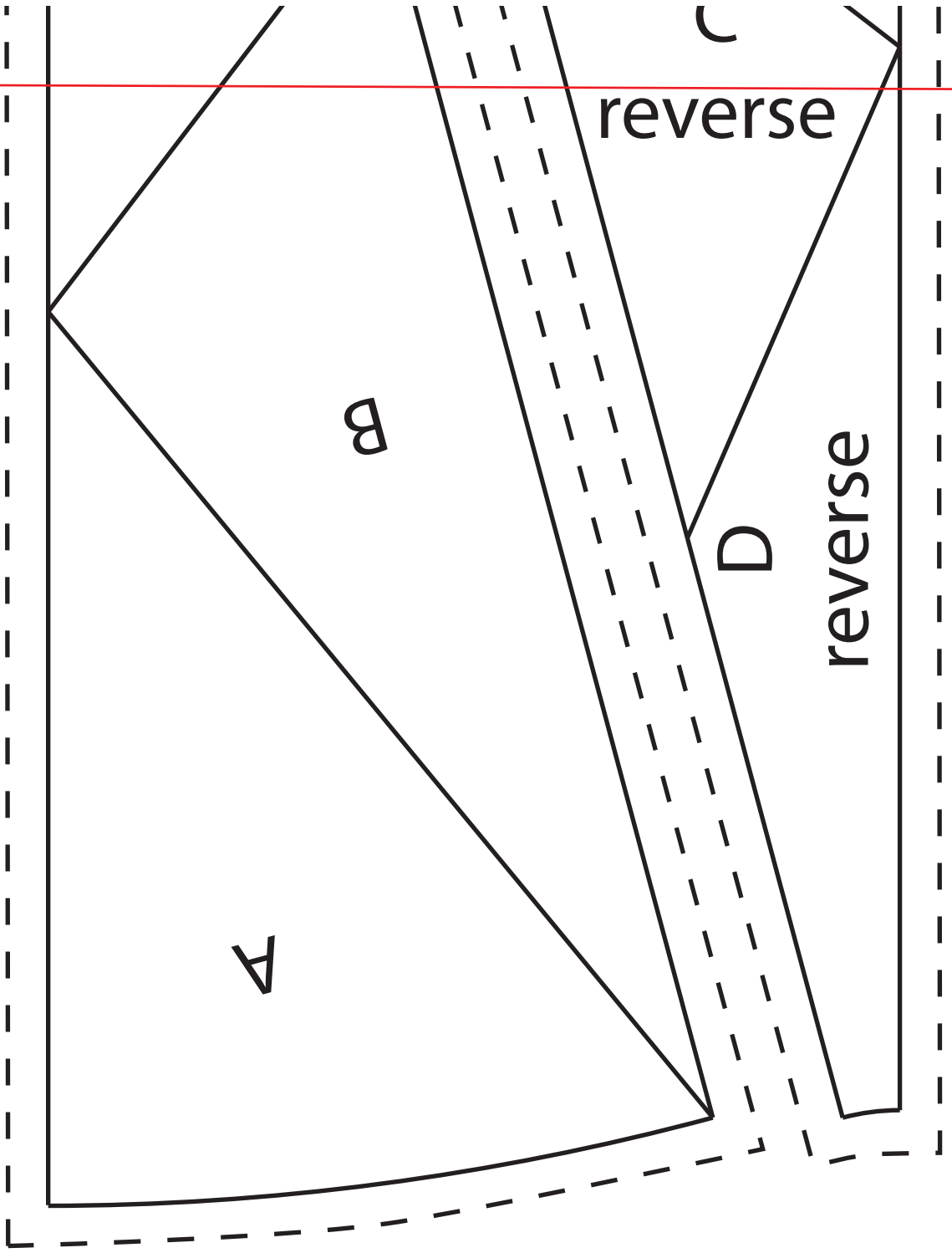


CIRCLE SECTIONS PAGE 1

Make twelve copies of Circle Sections pages 1 and 2. Glue pages together at red line. Then, cut roughly around sections for foundation paper piecing.

Glue together with next page





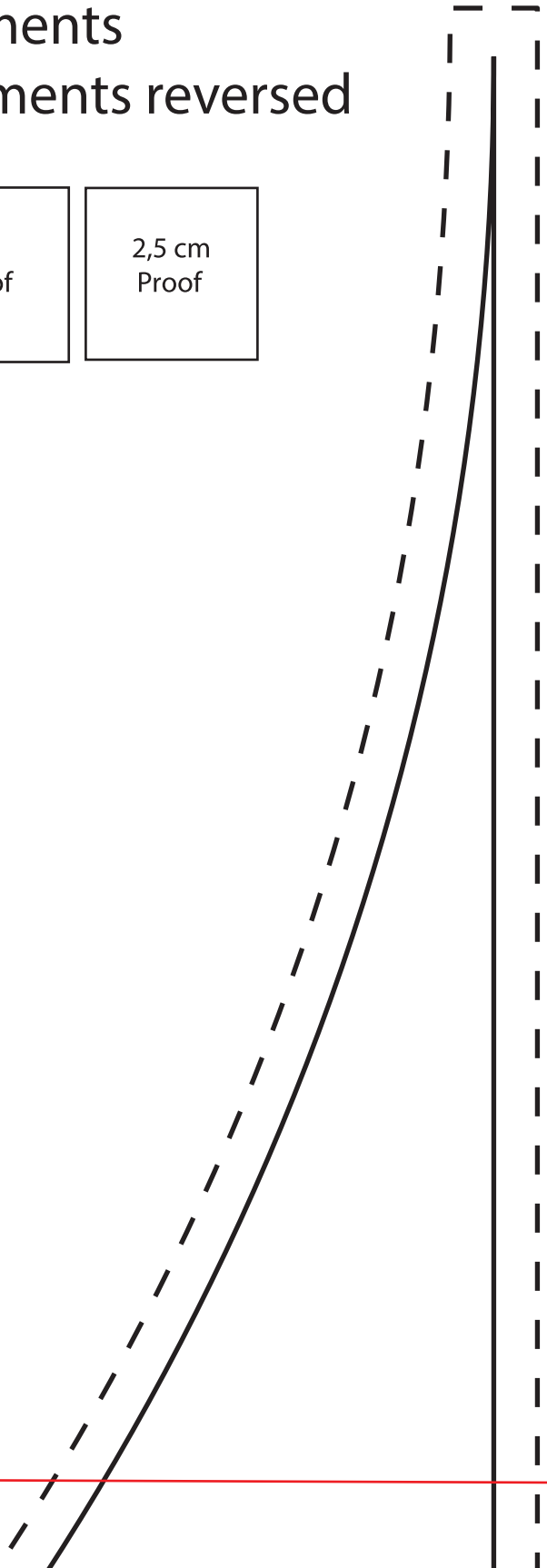
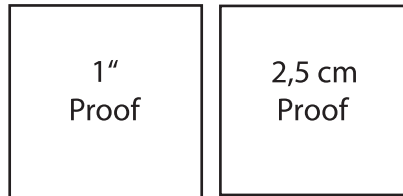
1"
Proof

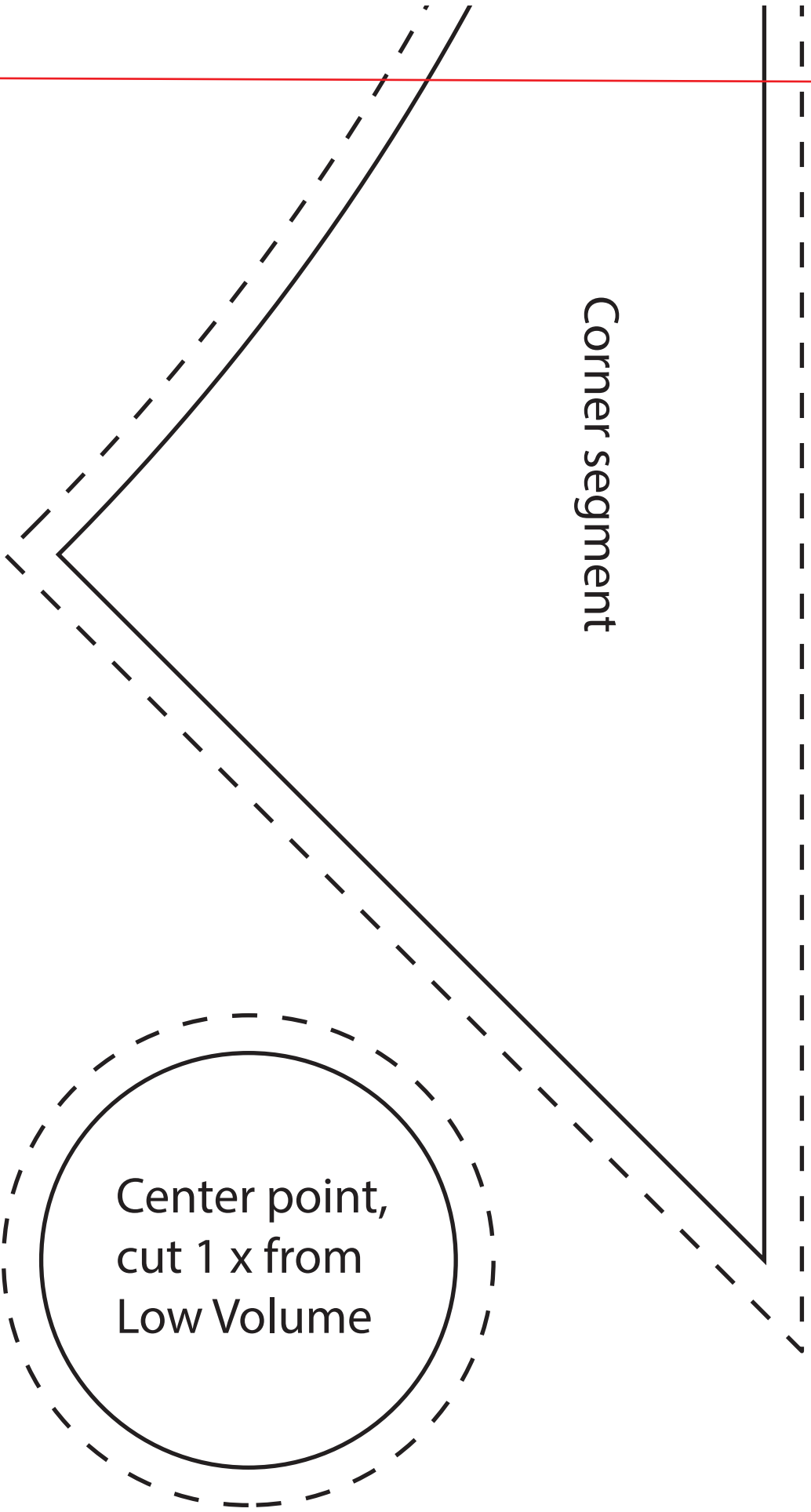
2,5 cm
Proof

CIRCLE SECTIONS PAGE 1

Glue Corner Segments pages 1 and 2 together at red line to create Corner Segment template. Flip template to the wrong side to cut Corner Segment reversed.

Cut 4 Corner Segments and 4 Corner Segments reversed





Corner segment

Center point,
cut 1 x from
Low Volume

QUILT LAYOUT DIAGRAM

